

⑧ NOV/ YOUTH: Dismount, ground tie before roping; rope from ground,

Stock Horse, VRH Trail

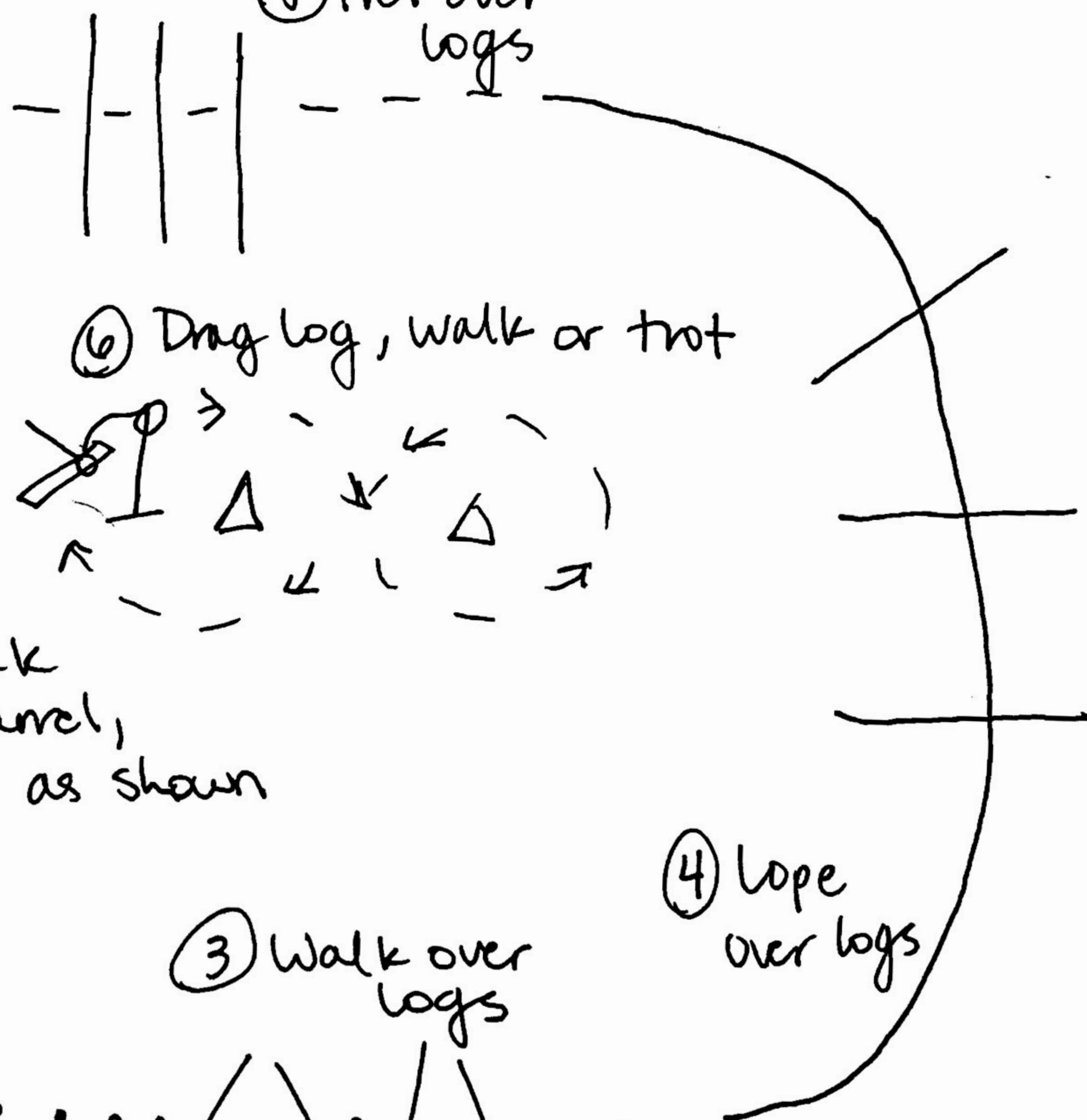
(riders may carry their own rope or use the one provided)

⑧ ALL OTHERS:
Walk to dummy, take down rope. Swing to throat at dummy.

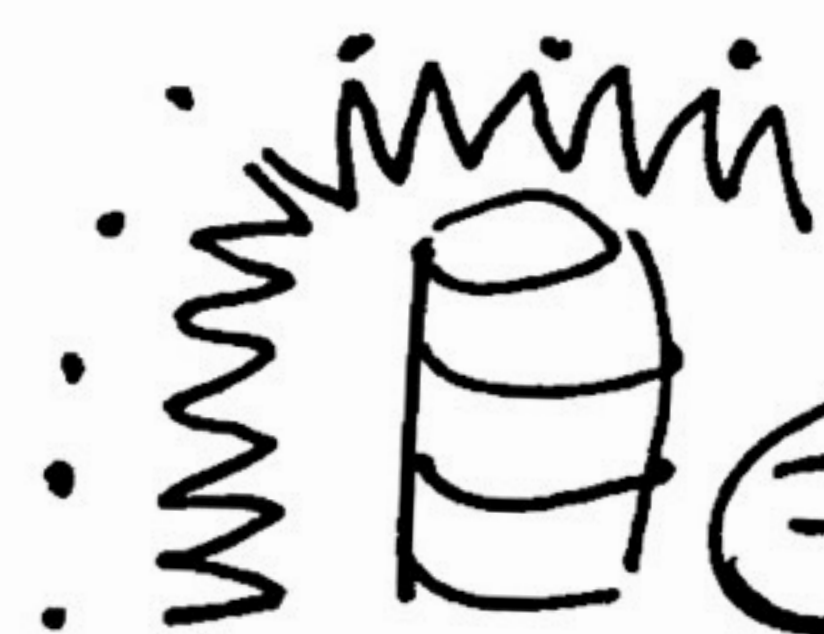


Dismount, remove rope & lead out at walk.

⑤ Trot over logs

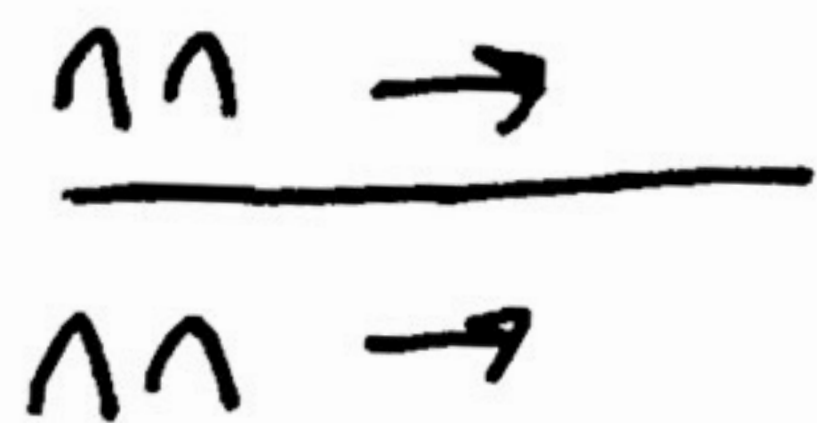


⑥ Drag log, walk or trot



⑦ Walk to barrel, back as shown

① Sidepass R to gate



② RH push gate

③ Walk over logs

④ Lope over logs

Pleasure first, then trail

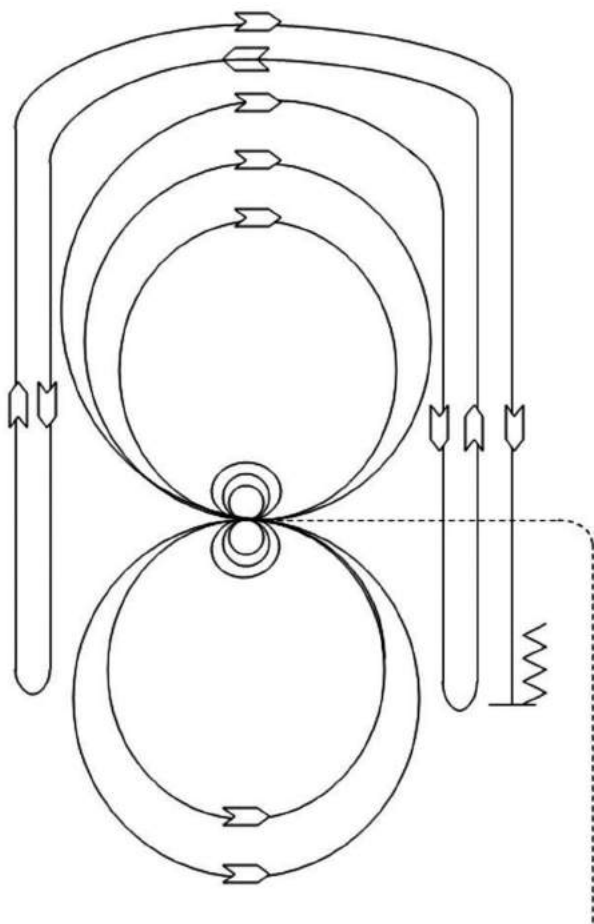
START

Stock Horse Pleasure, AQHA VRH Ranch Riding
SHTX Pleasure Pattern #3
Signs will be on pattern

PATTERN III

- Ordinary Walk - 30 feet
- Lope - 150 feet
- Extended Trot - 240 feet
- Trot - 120 feet
- Stop and Reverse
- Trot - 90 feet
- Lope - 150 feet
- Extended Lope - 200 feet
- Extended Walk - 75 feet
- Stop and Back

VRH Ranch Reining Pattern I



Mandatory Markers:

The judge shall indicate with markers on arena fence the center of the pattern.

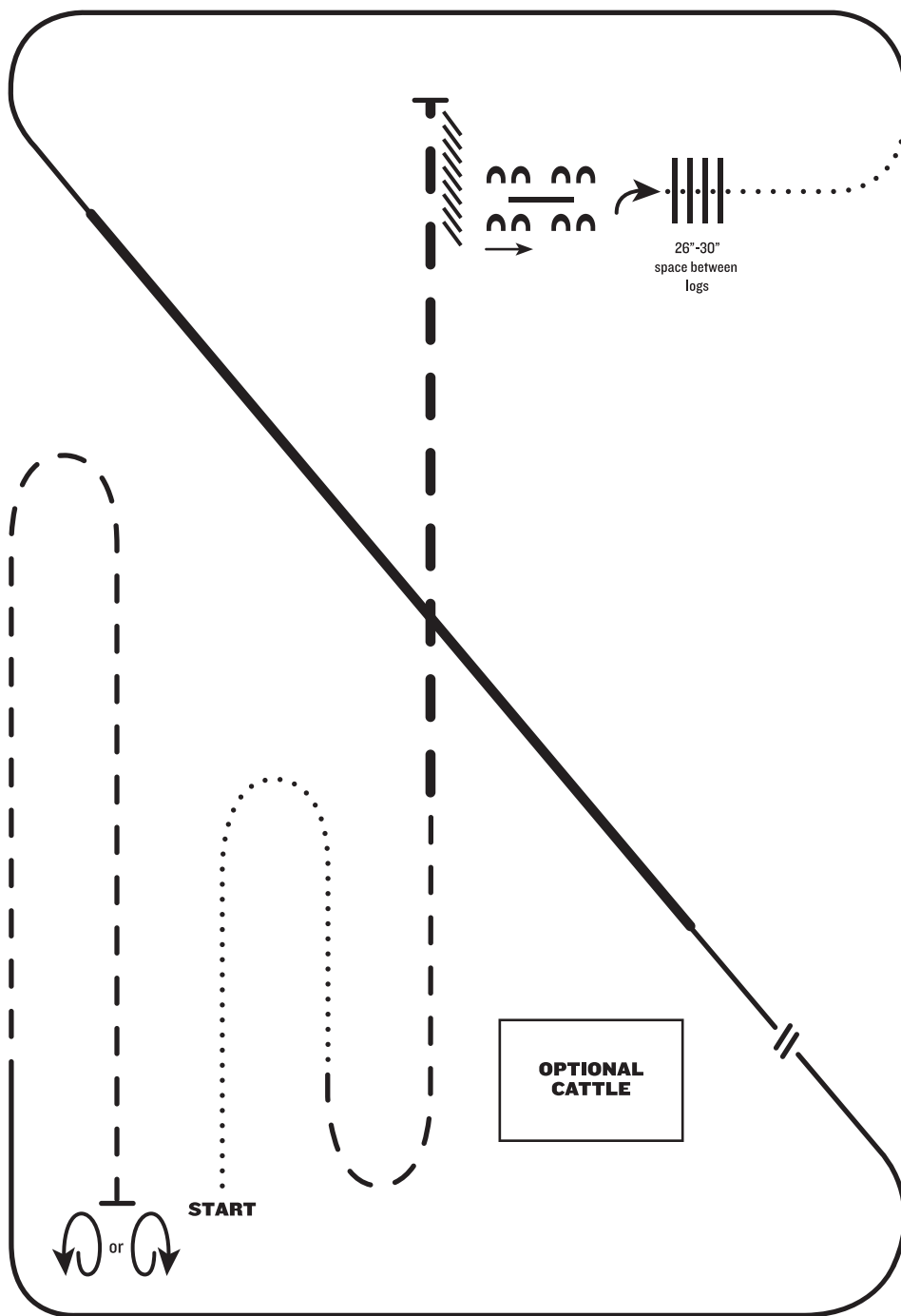
Ride pattern as follows:

1. Trot to center of arena and stop.
2. Complete three spins in each direction
3. Begin on right lead and lope two large fast circles to the right, change leads.
4. Lope two large fast circles to the left, change leads.
5. Begin a large circle to the right but do not close this circle. Run down the right side of the arena past the center marker and do a left roll back at least 20 feet from the wall or fence, no hesitation.
6. Continue back around the previous circle but do not close this circle. Run down the left side of the arena past the center marker and do a right roll back at least 20 feet from the wall or fence, no hesitation.
7. Continue back around previous circle but do not close this circle. Run down the right side of the arena past the center marker and do a sliding stop at least 20 feet from the wall or fence. Back up at least 10 feet. Hesitate to show completion of pattern.

RANCH RIDING - PATTERN 7

LEGEND

.....	Walk
....	Extended Walk
- - -	Trot
- - -	Extended Trot
— — —	Lope
— — —	Extended Lope
////	Back
//	Lead Change



1. Walk
2. Trot
3. Extended trot
4. Stop and back
5. Side pass right over log
6. 1/4 turn right, walk over logs
7. Walk
8. Lope left lead
9. Extended lope left lead
10. Collect lope, change leads (simple or flying)
11. Lope right lead
12. Trot
13. Stop, one 360° turn either direction

Note: The drawn description of this pattern is only intended for the general depiction of the pattern. Exhibitors should utilize the arena space to best exhibit their horses.